

THE NATURAL WAY
TO FEED, REWARD
AND CARE FOR
YOUR DOG

Carnis





Pressed kibbles

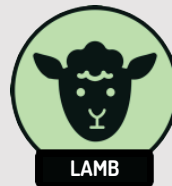
In our range you will find pressed kibbles in two sizes: **Small**, for small dog breeds and puppies and **Regular** for medium and large dog breeds, based on four different animal protein sources. Because the kibbles are different in terms of ingredients and contain all the required nutrients, there is a suitable diet for every dog. This makes it suitable for dogs of all sizes and ages.

High-quality raw materials

High-quality, natural raw materials are used, without the addition of artificial colours, fragrances and flavors. This makes the food not only healthy, but also irresistibly tasty. In addition, the diet only contains meat that is suitable for human consumption, but isn't used for that because of its appearance or simply because of the lack of demand for it.

Lightly digestible

The kibbles are compact and do not swell in the stomach, but fall apart in a short time, so that the stomach is not overloaded. Due to the method of preparing the kibbles, pressing at a relatively low temperature of $\pm 80^{\circ}\text{C}$, the high-quality raw materials are optimally used and the nutrients are retained. The different protein sources may be alternated to support the gastrointestinal tract.



Chicken



Composition: 28% chicken meal, gelatinized corn, gelatinized rice flour, oatmeal flour, beet pulp, fractionated fat powder, beef fat, vitamin and mineral mix, locust bean flour, tripe meal, 0.5% Scottish salmon oil

Analytical constituents: Crude protein 25%, Crude fat 14%, Crude ash 7%, Crude fiber 4%, Moisture 8%

Additives/kg: 3b108-Iron 50 mg, 3b201-Iodine 1.5 mg, 3b405-Copper 7 mg, 3b502 Manganese 35 mg, 3b801 Selenium 0.45 mg, 3b607-Zinc 100 mg, Vitamin A 15000 IU, Vitamin D3 1500 IU, Vitamin E 250 mg, Biotin 1500 µg

Salmon



Composition: 26% salmon meal, softened rice flour, softened corn, softened sorghum, softened oats, beef fat, beet pulp, vitamin and mineral mix, fractionated fat powder, chicken meal, 0.5% sunflower oil, 0.05% chondroitin and 0.05% glucosamine

Analytical constituents: Crude protein 23%, Crude fat 12%, Crude ash 6%, Crude fiber 4%, Moisture 10%

Additives/kg: 3b108-Iron 50 mg, 3b201-Iodine 1.5 mg, 3b405-Copper 7 mg, 3b502 Manganese 35 mg, 3b801 Selenium 0.45 mg, 3b607-Zinc 100 mg, Vitamin A 15000 IU, Vitamin D3 1500 IU, Vitamin E 250 mg, Biotin 1500 µg

Rabbit



Composition: 30% rabbit meal, 25% gelatinized oats, gelatinized sorghum, locust bean flour, beet pulp, coconut fat, brewer's yeast, vitamin and mineral mix, beef fat, Scottish salmon oil

Analytical constituents: Crude protein 23%, Crude fat 12%, Crude ash 6%, Crude fiber 3%, Moisture 10%

Additives/kg: 3b108-Iron 50 mg, 3b201-Iodine 1.5 mg, 3b405-Copper 7 mg, 3b502 Manganese 35 mg, 3b801 Selenium 0.45 mg, 3b607-Zinc 100 mg, Vitamin A 15000 IU, Vitamin D3 1500 IU, Vitamin E 250 mg, Biotin 1500 µg

Lamb



Composition: gelatinized sorghum, 16% lamb meal, salmon meal, locust bean meal, beet pulp, beef fat, 3% brewer's yeast, fractionated fat powder, vitamin and mineral mix, egg powder, dextrose and 0.6% Scottish salmon oil

Analytical constituents: Crude protein 20%, Crude fat 12%, Crude ash 7%, Crude fiber 3%, Moisture 10%

Additives/kg: 3b108-Iron 50 mg, 3b201-Iodine 1.5 mg, 3b405-Copper 7 mg, 3b502 Manganese 35 mg, 3b801 Selenium 0.45 mg, 3b607-Zinc 100 mg, Vitamin A 15000 IU, Vitamin D3 1500 IU, Vitamin E 250 mg, Biotin 1500 µg



Puppy Weight	2 -3 mth	4 - 6 mth	6 - 8 mth	9 - 12 mth
0,5kg	40	30	-	-
1kg	70	55	-	-
2kg	115	95	80	-
3kg	160	130	110	85
4kg	195	165	135	110
5kg	230	195	160	130
6kg	265	225	185	150
7kg	300	250	210	165
8kg	330	280	230	185
9kg	365	305	255	200
10kg	395	330	275	220
15kg	535	445	370	295
20kg	-	555	460	370
25kg	-	660	545	440
30kg	-	-	630	500

Nutritional advice

The amount of food (grams per day) stated in the table is a guideline and depends on the age, size and activity of your dog. Always feed at your own discretion and adjust quantities as needed.

Adult Weight	Low activity	Moderate activity	High activity
3kg	60	75	105
4kg	75	90	130
5kg	85	110	150
10kg	150	185	255
15kg	200	250	345
20kg	250	310	430
30kg	340	420	585
40kg	425	520	725
50kg	500	615	855
60kg	575	705	980

Steamed meat

Our steamed meat sausages are a complete food for adult dogs, made from delicious steamed duck, chicken, rabbit, horse, lamb or beef meat. You can use the sausages as a daily meal, but also in combination with kibbles or as a replacement for frozen meat. The handy size and shelf life make it ideal for use as food during holidays. The irresistible taste also makes the food very suitable for picky eaters.

The sausage is easy to cut into slices or cubes and can therefore also be used as a reward or as a filling for feeding puzzles and lick mats.

Puppy and junior

We have developed a junior steamed meat sausage especially for puppies from 14 weeks. Made from tasty beef and chicken. A balanced composition that meets the daily nutritional needs. Can be used in combination with dry food or on a fixed day of the week.

Natural ingredients

Each sausage contains delicious steamed meat to keep your dog healthy and enjoying the food. The food is free from artificial fragrances, colors and flavors.

The sausages are available in 200, 400 and 800 grams.



Easy to take
with you

 kurgo

Carnit's

400g



Nutritional advice

The amount of food stated in the table is a guideline and depends on the age, breed, size and activity of your dog. Always feed at your own discretion and adjust quantities as needed.

Serve at room temperature. Store the unused amount in the refrigerator and use within 24-48 hours. For optimal preservation of the nutrients, we recommend not freezing the sausage.

Junior (Grams per day, only applicable to the 'junior' variant)

Current weight	4 - 6 mth	6 - 9 mth	9 - 12 mth
2	250	200	160
5	500	410	330
8	700	580	470
10	830	700	550
15	1100	940	750
20	1400	1260	930
25	1660	1380	1100
30	1900	1580	1270

Adult

Current weight	Grams per day
1 - 5 kg	100 - 300
5 - 10 kg	300 - 550
10 - 20 kg	550 - 900
20 - 30 kg	900 - 1200

COMPLETE



Complete frozen meat

Our range contains three complete frozen meat variants to pamper your dog every day. A tasty mix of high-quality meat and the necessary vitamins and minerals, without synthetic fragrances, colors or flavors. The complete diet consists of two animal protein sources. You can choose from the combinations of beef - chicken, salmon - chicken and horse - lamb.

You can use the frozen meat as a complete meal, but also alternate with, for example dry food. The balanced composition makes the frozen meat suitable for puppies and adult dogs.

Horse - Lamb



Beef - Chicken



Salmon - Chicken



ADDITIONAL



Additional frozen meat

We have additional frozen meat to supplement the daily meal of your dog. This offers an extensive range of animal protein sources, without additives. You can choose to combine the additional frozen meat with our pressed kibbles every day, but it is also possible to choose a fixed day per week for this.

The additional frozen meat does not contain all the necessary nutrients that a dog needs for its daily nutritional needs. We therefore recommend adding a maximum of 20% of the daily amount of supplementary frozen meat to your dog's main meal.



Supplements

Just like with people, it is important for dogs to get enough vitamins and minerals. A healthy dog gets these from their daily, complete diet. Yet there are dogs that need something extra, can use support, for example with low resistance, to contribute to healthy skin and coat, to keep moving smoothly or to keep the urinary tract healthy. We have a number of natural supplements especially for those dogs. A selection from our range:

Glucosamine & chondroitin complex



Seaweed



Cranberry



Salmon oil



Carrot flour





Reward

Chews

For long-lasting chewing pleasure for your dog or to reward him, we have a wide choice of chewing snacks in our range. The chews are of only good quality and contain only natural ingredients. We also use residual and by-products to prevent waste. In order to offer dogs of all ages and sizes a suitable snack, we use different animal protein sources and there are snacks in various sizes and hardnesses. There is a tailor-made snack for the moderate to avid chewer.

Reward snacks

As a tasty snack, for on the road or during the (puppy) course, you can use our trainers to reward your dog. The trainers are made from various animal protein sources, 100% natural and available in multiple sizes and hardnesses. We have softies, crunchies and meat strips, among others. Each one irresistibly delicious!

Bones

Dogs naturally have the desire to chew on something. To meet your dog's chewing needs, you can spoil him with one of our natural bones. The bones come from one animal protein source and naturally contain many nutrients.







Coat care

In addition to our food, we can also ensure your dog's healthy skin and coat with our optimally tailored coat care products. In our range you will find nourishing shampoos, moisturizing conditioners and refreshing and soothing bodymists.

Caring shampoos

Every now and then your dog could use a wash, for example after rolling in something dirty or to support his skin/coat. Because it is better not to wash your dog with human shampoo, we offer special dog shampoos.

Nourishing conditioner

For an extra shiny, soft and easy-to-comb coat for your dog, you can use our shampoos in combination with our nourishing conditioner.

Refreshing and soothing bodymists

Your dog may not always smell fresh. For example, after walking in the rain or after swimming. Then you can use one of our delicious bodymists for immediate refreshment. This way, your dog will immediately smell good again, without having to wash him. Another nice extra: in addition to immediate refreshment, our bodymists also have a soothing and caring effect, which ensures good combability of the coat and extra shine.



Food box & Playhouse

Do you have or expect a puppy at home? Then good nutrition is essential. Meet our food box & playhouse: a puppy package full of fun and tasty products to give your new buddy a good start.

Once you have unpacked the package, you certainly don't have to throw the packaging away! You can build it easily into a fun playhouse. Puppies of small dog breeds can play and sleep in it, but you can also store their toys or snacks in it. Fun and delicious!

Contents: a 2kg bag of pressed kibbles, snack, toy, measuring cup and information.

You can find our food box & playhouse at a Carnis sales point near you.
For more information, see www.carnis.nl





Contents



Carnis_petfood



Één soort droogvoeding voor verschillende leeftijden? Jazeker!...



Carnis_petfood



De toevoeging van zalmolie zorgt niet alleen voor extra glans in de voerbak..



Carnis_petfood



"Na lang zoeken naar de juiste voeding, kwamen we bij Carnis uit..."

Follow us!



@carnis_petfood



@carnis.nl



@carnis_petfood

Carnis, the basis for a healthy lifestyle!

Naturally born from a passion for animals and their health. We offer suitable nutrition for dogs and cats of all ages and with various sensitivities.

Our range consists of kibbles, fresh and steamed meat, natural snacks, supplements and coat care products.

CARNIS

Voltastraat 32
7903 AB Hoogeveen
Phone +31 (0) 85-7603123
info@carnis.nl
www.carnis.nl



Food box & Playhouse

Do you have or expect a kitten at home? Then good nutrition is essential. Get to know our food box & playhouse: a kitten package full of fun and tasty products to give your new buddy a good start.

Once you have unpacked the package, you certainly don't have to throw the packaging away! You build it easily into a fun playhouse. Your kitten can play and sleep in it endlessly, but you can also store its toys or snacks in it. Fun and delicious!

Contents: a bag of kitten kibbles 1 kg, snack, toy, measuring cup and information.

You can find our food box & playhouse at a Carnis sales point near you.
For more information, see www.carnis.nl





Contents ↗



Pamper

As a tasty snack to pamper your cat with, you can choose from our trainers and chews especially for cats. They are made from various animal protein sources, 100% natural and available in multiple sizes and hardnesses.

We have softies: soft, airy trainers and crunchies: crunchy trainers. Each one irresistibly delicious!

Trainers

Our trainers are ideal for use in cat puzzles and sniffing mats. You hide the trainers between the strings of the sniffing mat or in a puzzle and your cat has to look for them. This is called brain work. With brain work you give your cat a mental challenge and his senses are optimally stimulated. In addition, it strengthens the bond between you and your cat and prevents boredom.

Chews

In addition to trainers, we also have snacks that your cat needs to chew on a little longer. Chewing a chew snack cleans your cat's teeth naturally. Chewing stimulates saliva production and thus contributes to the prevention of plaque formation.



Supplements

Just like with people, it is important for cats to get enough vitamins and minerals. A healthy cat gets these from their daily, complete diet. However, there are cats that could use some extra support, for example with low resistance, to contribute to healthy skin and coat, to continue to move smoothly or to keep the urinary tract healthy. We have a number of natural supplements especially for those cats. A selection from our range:

Glucosamine & chondroitin complex



Seaweed



Cranberry



Salmon oil



Carrot flour





100% Cranberry
100% Cranberry Powder
100% Cranberry-Pulver
100% Poudre de cranberry

Carnis
e 200 gr

100% Pouvoir de cranberry
Le cranberry est une baie qui contient une grande quantité de vitamine C et de polyphénols. Ces substances ont des propriétés antioxydantes et anti-inflammatoires. Elles aident à renforcer le système immunitaire et à protéger contre les infections. Le cranberry est également connu pour ses effets bénéfiques sur la santé de la vessie.

recommander. En cas de grossesse, d'allaitement ou de traitement médical, veuillez consulter votre spécialiste avant de le utiliser. En cas d'intolérance, réduire le dosage et consulter votre médecin.

Les effets secondaires ne sont pas connus. En cas de réaction allergique, arrêter immédiatement.

Contient des ingrédients naturels.

ADDITIONAL



Additional frozen meat

We have additional frozen meat to supplement the daily meal of your cat. This offers an extensive range of animal protein sources, without additives. You can choose to combine the additional frozen meat with our kibbles every day, but it is also possible to choose a fixed day per week for this.

The additional frozen meat does not contain all the necessary nutrients that a cat needs for its daily nutritional needs. We therefore recommend adding a maximum of 20% of the daily amount of supplementary frozen meat to your cat's main meal.



Nutritional advice

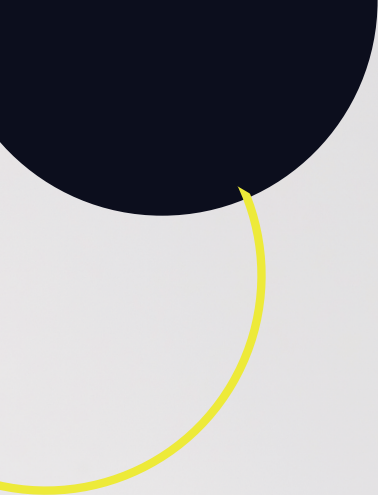
The amount of food stated in the table is a guideline and depends on the weight and age of the cat. Always feed at your own discretion and adjust quantities as needed.

Kitten

Current weight	2 - 4 mth	4 - 9 mth	9 - 12 mth
1kg	40	30	-
1,5kg	55	45	-
2kg	65	55	40
2,5kg	75	60	50
3kg	85	70	55
3,5kg	95	80	60
4kg	105	85	70
5kg	-	100	80
6kg	-	115	90
7kg	-	125	100

Adult cat

Current weight	Low activity	Moderate activity	High activity
2kg	20	30	40
3kg	25	40	50
4kg	30	45	65
5kg	35	55	75
6kg	40	65	85
8kg	50	80	105
10kg	60	90	120



Salmon

Composition: 17% dehydrated salmon, dehydrated fish, peas, sweet potato, 10% fresh salmon, poultry fat, 4% fish oil, dried apple, dried beet pulp, 2% cellulose, linseed, dried alfalfa, hydrolysed chicken liver, yeast, minerals, 0.2% dried cranberry, 0.2% inulin, pumpkin flour, 0.04% crustacean and mollusc extract (source of glucosamine), 0.02% chondroitin sulphate, Yucca schidigera extract

Analytical components: Crude protein 32%, Crude fat 20%, Crude ash 8%, Crude fiber 6%, Moisture 8%

Additives/kg: 3a370 - Taurine 750 mg, 3b103 - Iron 100 mg, 3b202 - Iodine 1 mg, 3b405 - Copper 5 mg, 3b502 - Manganese 40 mg, 3b801 - Selenium 0.2 mg, 3b605 - Zinc 150 mg, Vitamin A 16500 IU, Vitamin D3 1650 IU, Vitamin E 110 mg, Biotin 225 µg

Adult XL

Composition: 25% fresh turkey meat, 17% dehydrated turkey, sweet potato, peas, pea protein isolate, amaranth, 4% fish oil, poultry fat, dried beet pulp, 2% cellulose, linseed, hydrolyzed chicken liver, yeast, 0.2% dried cranberry, 0.2% inulin, minerals, pumpkin flour, 0.04% crustacean and mollusc extract (source of glucosamine), 0.02% chondroitin sulphate, Yucca schidigera extract

Analytical components: Crude protein 30%, Crude fat 18%, Crude ash 8%, Crude fiber 5%, Moisture 8%

Additives/kg: 3a370 - Taurine 2700 mg, 3b103 - Iron 100 mg, 3b202 - Iodine 1 mg, 3b405 - Copper 5 mg, 3b502 - Manganese 40 mg, 3b801 - Selenium 0.2 mg, 3b605 - Zinc 150 mg, Vitamin A 16500 IU, Vitamin D3 1650 IU, Vitamin E 110 mg, Biotin 225 µg



Kitten

Composition: 25% fresh turkey, dehydrated turkey, peas, amaranth, potato protein, poultry fat, 4% fish oil, rice, yeast, 2% cellulose, linseed, hydrolyzed chicken liver, dried beet pulp, minerals, 0.2% dried cranberry, 0.2% inulin, dehydrated green-lipped mussel, pumpkin flour, Yucca schidigera extract

Analytical components: Crude protein 34%, Crude fat 22%, Crude ash 8%, Crude fiber 5%, Moisture 8%

Additives/kg: 3a370 - Taurine 2700 mg, 3b103 - Iron 100 mg, 3b202 - Iodine 1 mg, 3b405 - Copper 5 mg, 3b502 - Manganese 40 mg, 3b801 - Selenium 0.2 mg, 3b605 - Zinc 155 mg, Vitamin A 17250 IU, Vitamin D3 1725 IU, Vitamin E 110 mg, Biotin 235 µg



Classic

Composition: dehydrated poultry, dried potato, 5% cellulose, poultry fat, dried apple, potato starch, dehydrated fish, 1.5% fish oil, yeast, hydrolyzed chicken liver, whole egg powder, dried beet pulp, annanologosaccharide, 0.5% inulin, linseed oil, Yucca schidigera extract, 0.03% extract of crustaceans and molluscs (source of glucosamine), 0.02% chondroitin sulphate

Analytical components: Crude protein 33%, Crude fat 13%, Crude ash 7%, Crude fiber 7%, Moisture 8%

Additives/kg: 3a370 - Taurine 1300 mg, 3b103 - Iron 100 mg, 3b202 - Iodine 1 mg, 3b405 - Copper 5 mg, 3b502 - Manganese 40 mg, 3b801 - Selenium 0.2 mg, 3b605 - Zinc 150 mg, Vitamin A 16500 IU, Vitamin D3 1650 IU, Vitamin E 110 mg, Biotin 225 µg



Kibbles

To contribute to the good health of your cat, we have developed a complete, grain-free food that, in addition to an irresistible taste, also contains all the ingredients your cat needs. In our range you will find four variants of kibbles: Kitten, Classic, Salmon and Adult XL. This makes the food widely applicable for both kittens and adult cats and even for larger breeds.

High meat percentage

When developing the food, we have only opted for high-quality, natural raw materials, without the addition of artificial colours, fragrances and flavors. In addition, the diet only contains meat that is suitable for human consumption, but is not used for that purpose because of its appearance or simply because of the lack of demand for this.

Healthy weight

All kibbles contain cellulose. This stimulates good digestion and also ensures a long-lasting feeling of satiety. This makes it easier to keep your cat at a healthy weight, but is also ideal for overweight cats. It also supports the removal of hair from the digestive system that has been swallowed by the cat. This means that fewer hairballs are spit out, but they become smaller included in the daily feces.

With taurine

It is important that your cat gets taurine through food. This essential amino acid is not normally produced by the body. Taurine has a positive effect on vision, the heart muscle and also ensures good digestion.



THE NATURAL WAY
TO FEED, PAMPER
AND CARE FOR
YOUR CAT

 Carnis

